



Generous 185m² home is made for large families with teenagers in mind. 4 bedrooms with extra family room on second floor, 2 bathrooms and open plan living opening onto a large verandah, makes a comfortable home for the whole family.

- Spacious open-plan living with 2 family rooms
- Easy indoor/outdoor
- Covered verandah
- 4 double bedrooms. Master with ensuite & walk-in-wardrobe
- 2 bathrooms (including ensuite)
- 2 separate toilets
- Double stack internal access garage

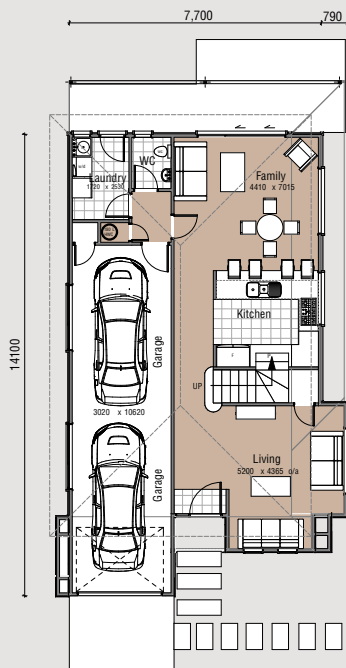


4  3  2  2 

3D FLOOR PLAN

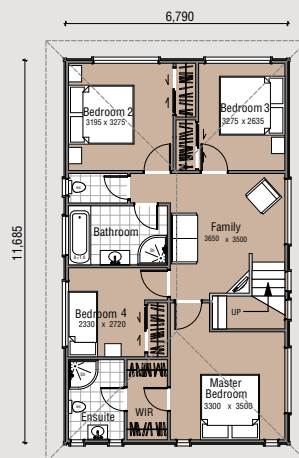


FLAT FLOOR PLAN



BTH185G

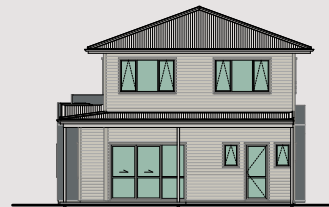
Plan area over frame: 185m²



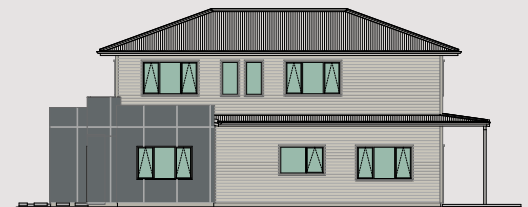
Features:

- Open-plan living with 2 family rooms
- 2 bathrooms (including ensuite)
- 4 bedrooms including master suite
- Double stack garage
- 2 separate WC

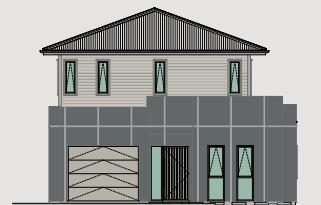
House Area 185m²



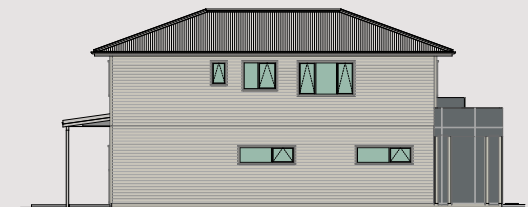
ELEVATION 1



ELEVATION 2



ELEVATION 3



ELEVATION 4