



This stylish 3 bedroom, 2 bathroom, 2 storey home with double garaging is ideal as a starter home or for couples. The open plan kitchen and dining with doors opening outside complete this urban entertainer.

- Easy indoor/outdoor
- 3 double bedrooms. Master with ensuite & walk-in-wardrobe
- Separate living to kitchen/dining area
- 2 bathrooms (including ensuite)
- Separate toilet
- Double internal access garage

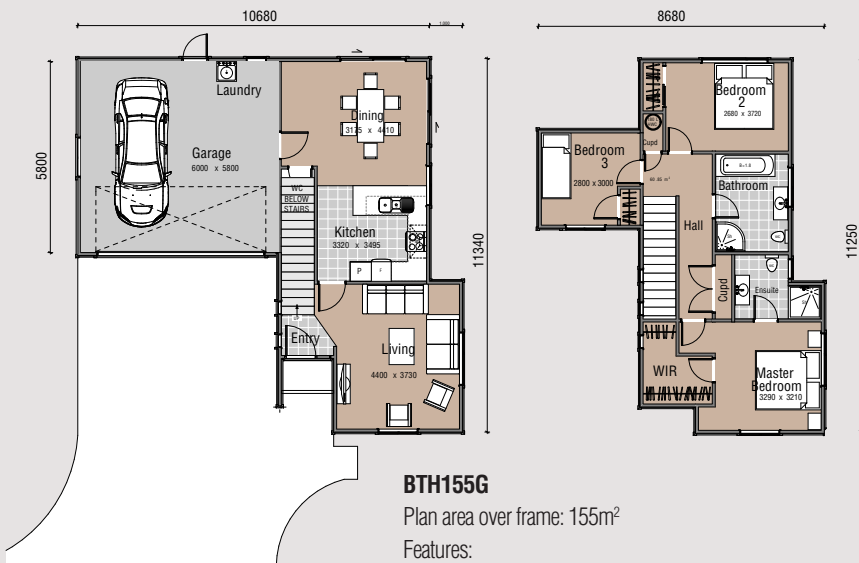


3  1  2  2 

## 3D FLOOR PLAN



## FLAT FLOOR PLAN



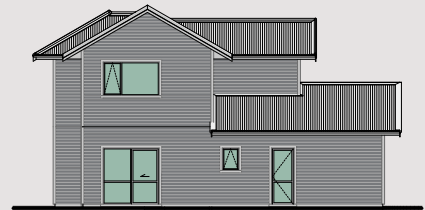
### BTH155G

Plan area over frame: 155m<sup>2</sup>

Features:

- 2 Bathrooms (including ensuite)
- 3 bedrooms including master suite
- Double garage
- Open-plan living
- Separate WC

House Area	155m <sup>2</sup>
------------	-------------------



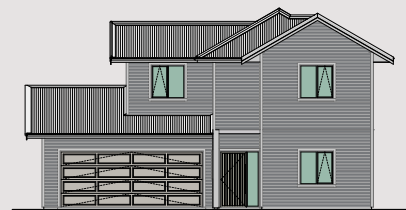
ELEVATION 1



ELEVATION 2



ELEVATION 3



ELEVATION 4