



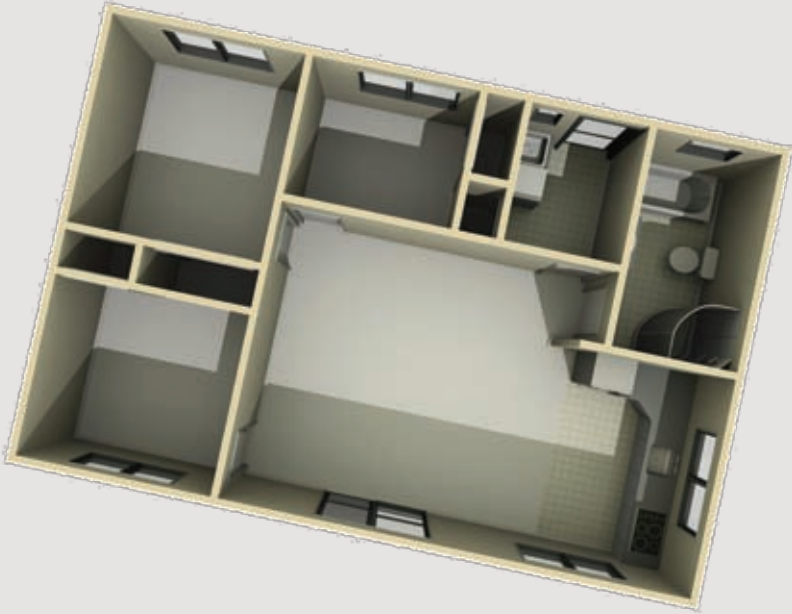
A smart solution for long, narrow sites, this practical home with spacious open-plan living delivers comfort and style in one.

- Spacious open-plan living
- Easy indoor/outdoor flow
- 3 bedrooms
- Large bathroom
- Separate laundry

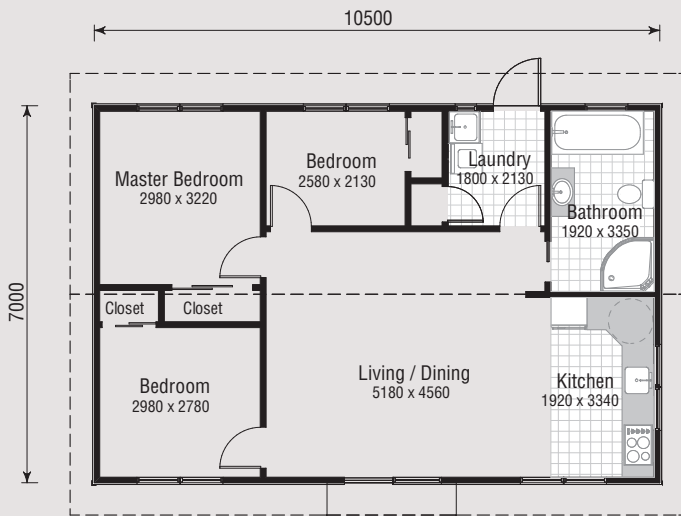


3  1  1 

## 3D FLOOR PLAN



## FLAT FLOOR PLAN



### BH75 Floor Plan

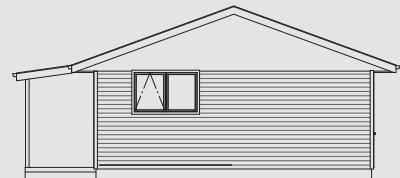
Plan area over frame: 75m<sup>2</sup>  
 Building perimeter over frame: 35m

- Features:
- Open plan living
  - 3 bedrooms
  - Large bathroom
  - Separate laundry

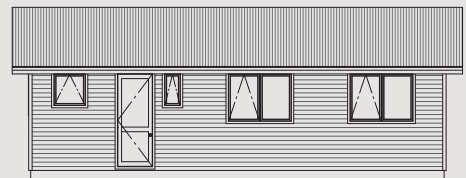
House Area 75m<sup>2</sup>



ELEVATION 1



ELEVATION 2



ELEVATION 3



ELEVATION 4