

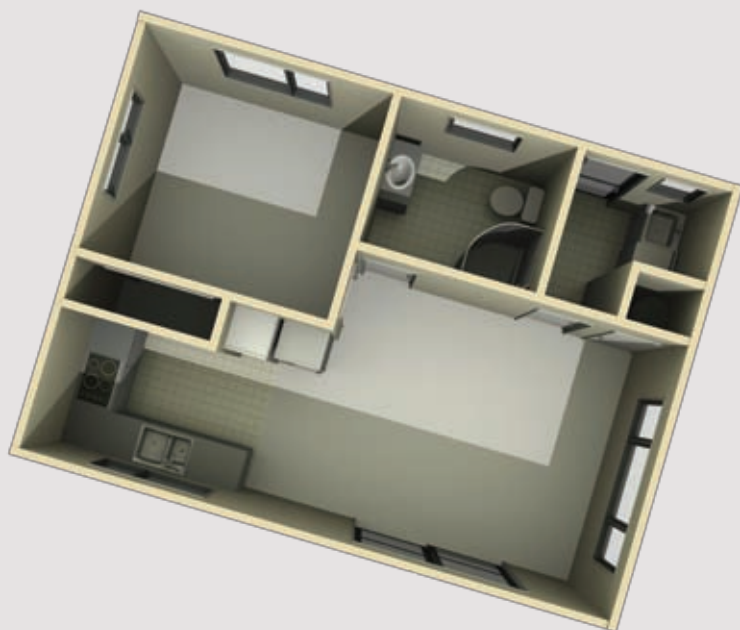


A smart solution for a minor dwelling, this practical home with spacious open-plan living delivers modern comfort and style.

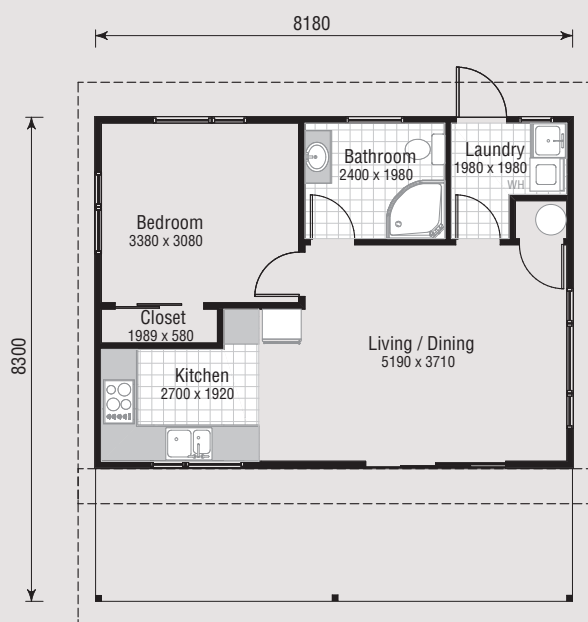
- Spacious open-plan living
- Easy indoor/outdoor flow
- 1 bedroom
- Separate laundry
- 1 bathroom



## 3D FLOOR PLAN



## FLAT FLOOR PLAN



### BH50 Floor Plan

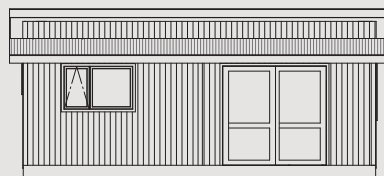
Plan area over frame: 50m<sup>2</sup>

Building perimeter over frame: 29m

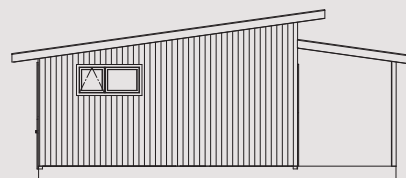
#### Features:

- Open plan living
- 1 bedroom
- Separate laundry
- Roofed entrance
- 1 bathroom

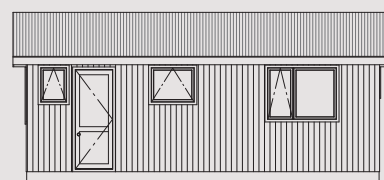
House Area 50m<sup>2</sup>



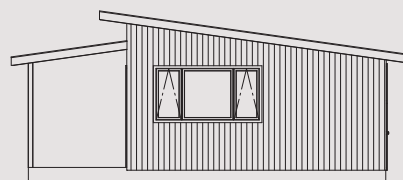
ELEVATION 1



ELEVATION 2



ELEVATION 3



ELEVATION 4