

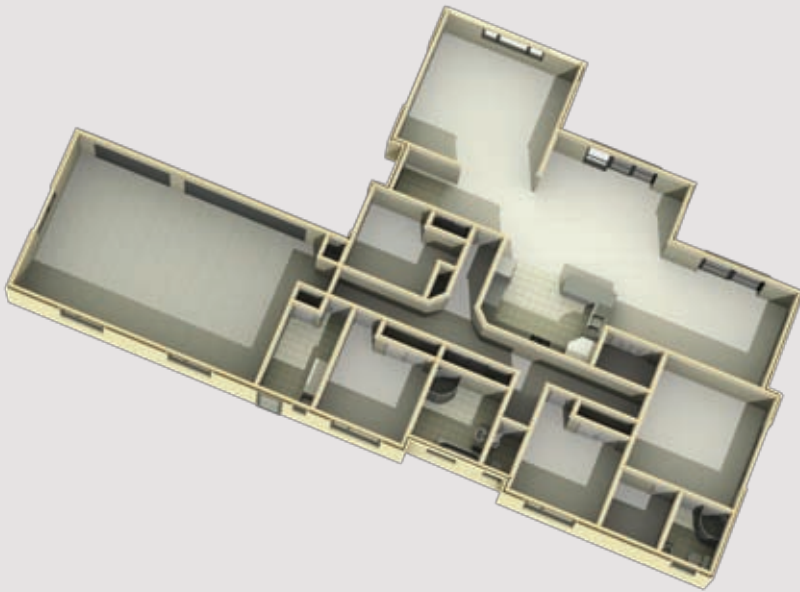


Enjoy the good life in this elegant, spacious light-filled home. Stunning indoor outdoor flow. Wide sweeping living/dining and family zones blend together, or seamlessly separate. Add a large master ensuite, large office and triple car garaging, and this is your dream home come true.

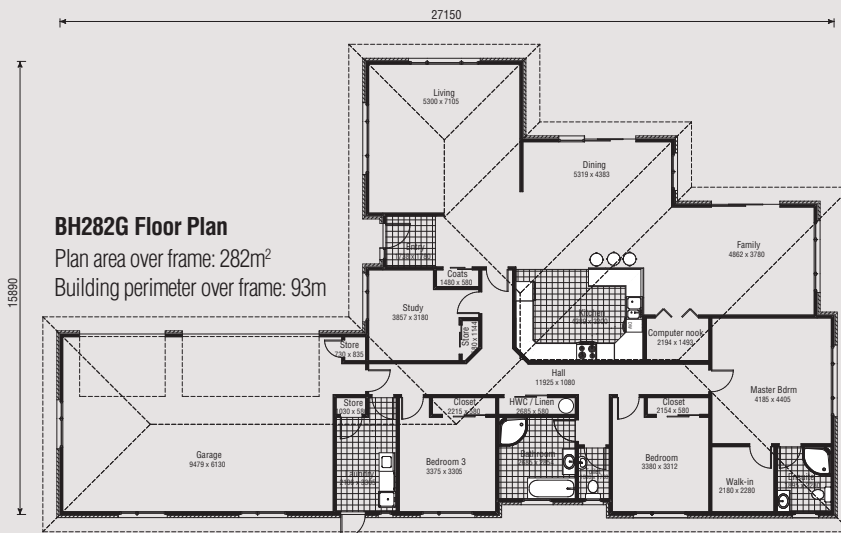
- Easy indoor/outdoor
- 2 living areas
- 3 bedrooms including master ensuite and walk-in-wardrobe
- 2 bathrooms (including ensuite)
- Separate WC to bathroom
- Separate study or 4th bedroom
- Ample storage
- Large separate laundry
- Triple internal access garage
- Computer nook



## 3D FLOOR PLAN



## FLAT FLOOR PLAN



### Features:

- 2 living areas
- 3 bedrooms including master ensuite and walk-in-wardrobe
- Study or 4th bedroom
- 2 bathrooms (including ensuite)
- Seperate WC to bathroom
- Large laundry
- Triple garage
- Computer nook

House Area 282m<sup>2</sup>



ELEVATION 1



ELEVATION 2



ELEVATION 3



ELEVATION 4