

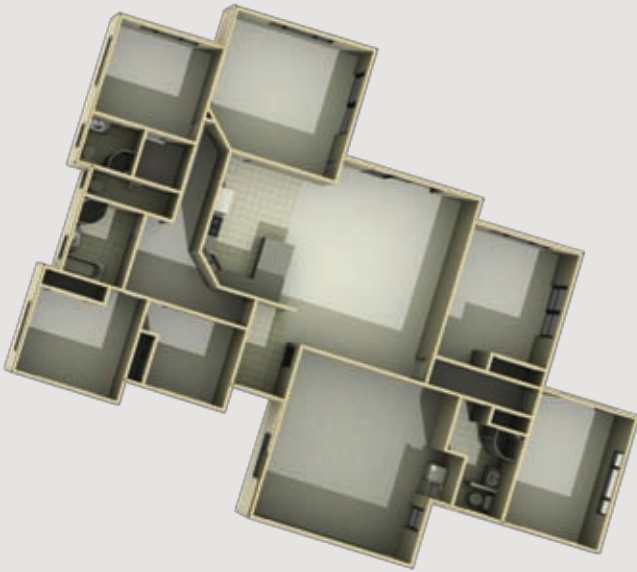


Spacious living forms the heart of this generously proportioned home. Featuring four bedrooms including master ensuite, and separate study, there is space to be together, and space to be apart.

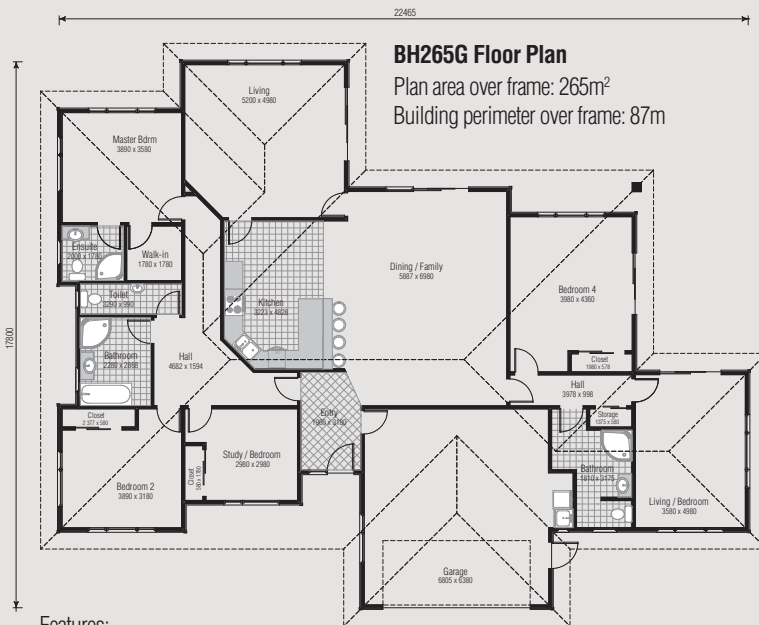
- Easy indoor/outdoor flow
- Open-plan with 2 living areas
- 4 bedrooms
- 3 bathrooms (including ensuite)
- 1 separate WC to bathroom
- Large separate laundry
- Extended living potential
- Double internal access garage
- Separate study or 5th bedroom



## 3D FLOOR PLAN



## FLAT FLOOR PLAN



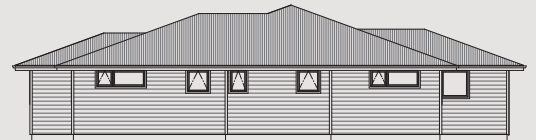
**Features:**

- 2 living areas
- Breakfast nook
- 4 bedrooms including master ensuite and walk-in-wardrobe
- Study or 5th bedroom
- 1 separate WC to bathroom
- Large laundry
- Double garage
- 3 bathrooms (including ensuite)

House Area 265m<sup>2</sup>



ELEVATION 1



ELEVATION 2



ELEVATION 3



ELEVATION 4