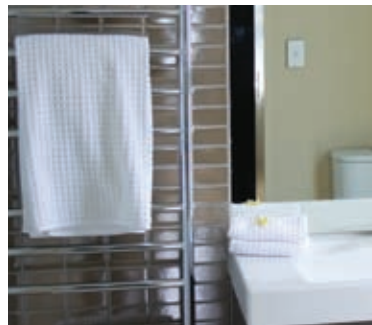




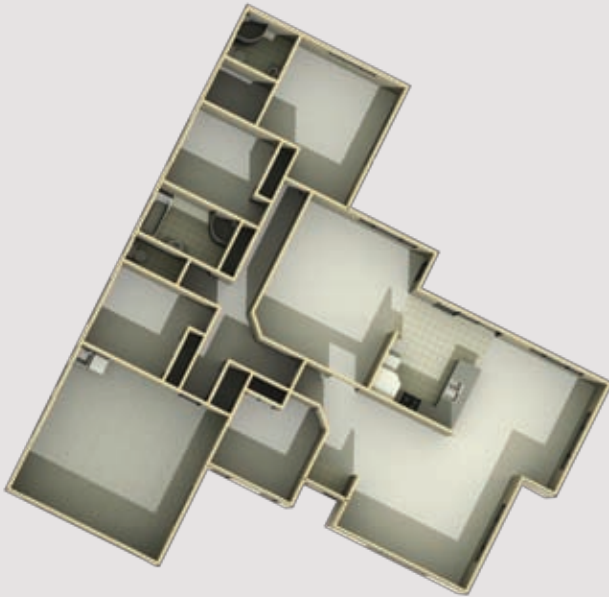
Lose yourself in the big-hearted proportions of this eye-catching home.

- Easy indoor/outdoor flow
- Open-plan with 2 living areas
- 3 bedrooms including master ensuite and walk-in-wardrobe
- 2 bathrooms (including ensuite)
- Double internal access garage
- Separate study or 4th bedroom
- Separate WC to bathroom

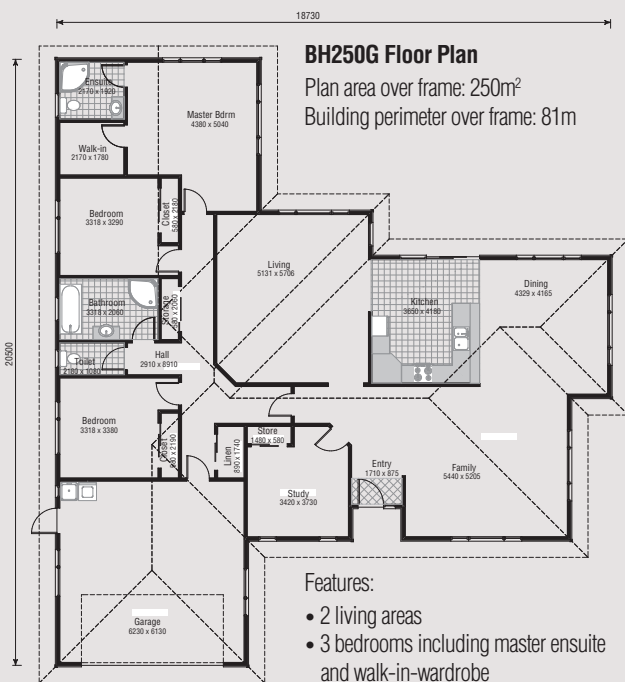


3  2  2  1  2 

3D FLOOR PLAN



FLAT FLOOR PLAN



Features:

- 2 living areas
- 3 bedrooms including master ensuite and walk-in-wardrobe
- Study or 4th bedroom
- 2 bathrooms (including ensuite)
- Double garage
- Separate WC to bathroom

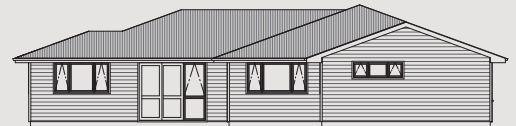
House Area 250m²



ELEVATION 1



ELEVATION 2



ELEVATION 3



ELEVATION 4