



Large open-plan living, family room and kitchen form the big heart of this smartly designed three bedroomed home.

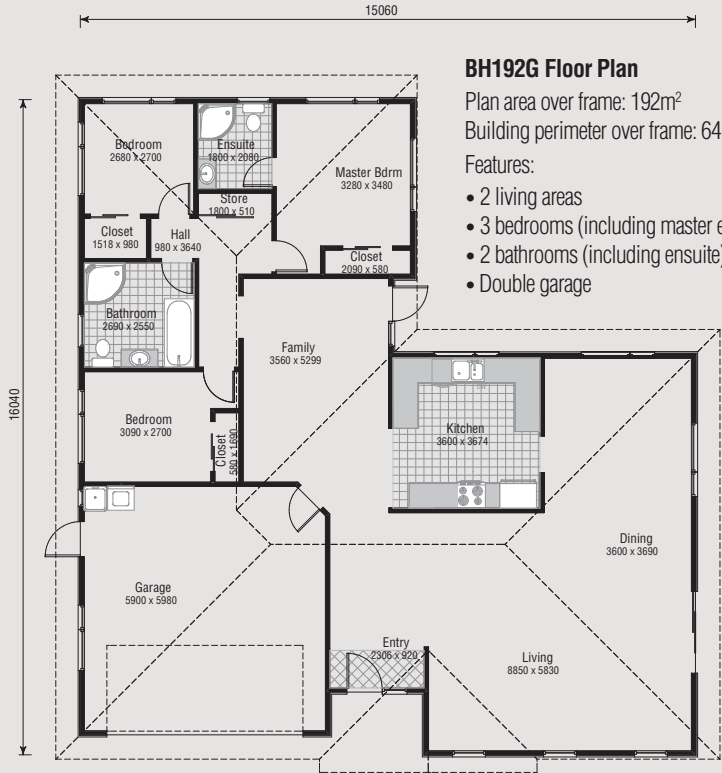
- Spacious open-plan with 2 living areas
- 3 double bedrooms including master ensuite
- 2 bathrooms (including ensuite)
- Double internal access garage



3D FLOOR PLAN



FLAT FLOOR PLAN



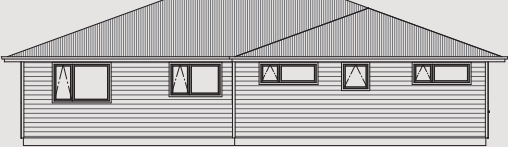
House Area 192m²



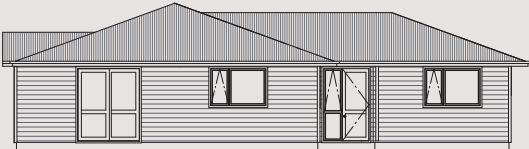
ELEVATION 1



ELEVATION 2



ELEVATION 3



ELEVATION 4

* All images are artist impressions or for display purposes only. Furnishings are not included in home package. Plans and descriptions have been prepared in good faith and with due care. Alterations may occur without notice. Intending purchasers should satisfy themselves by inspection and/or clarification with their builder prior to purchase. All plans are copyright whole and in part.