

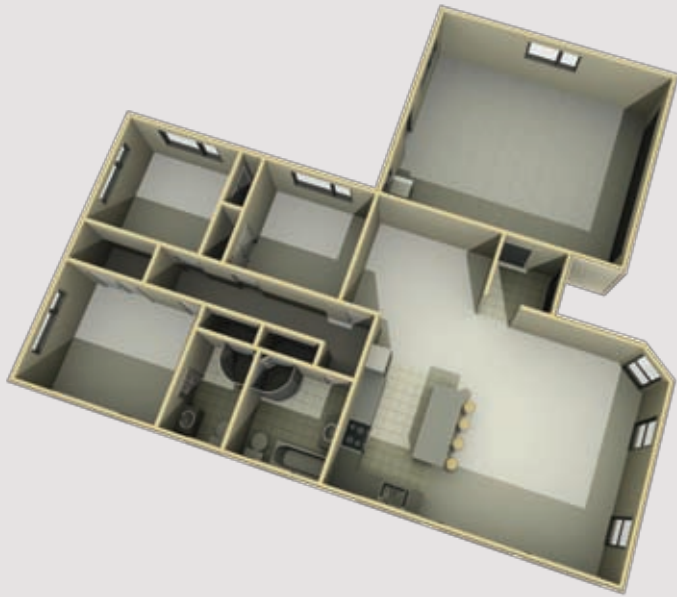


Space and light abound in this generously proportioned home. It caters for every comfort with large scale living and entertaining designed to capture the sun.

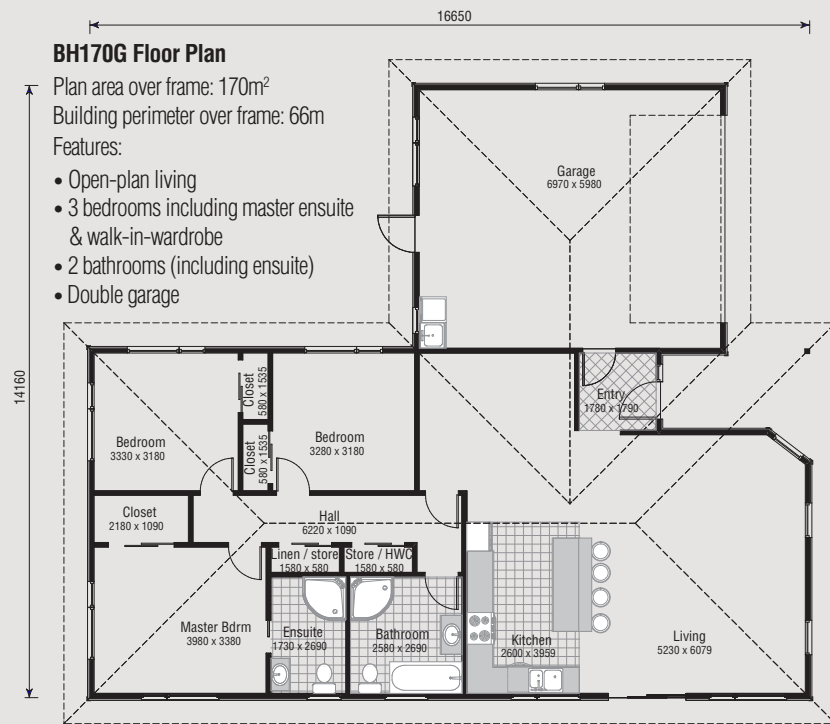
- Spacious open-plan living
- Easy indoor/outdoor flow
- 3 double bedrooms including master ensuite and walk-in-wardrobe
- 2 bathrooms (including ensuite)
- Double internal access garage



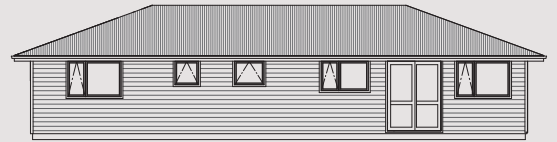
3D FLOOR PLAN



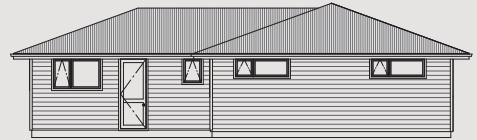
FLAT FLOOR PLAN



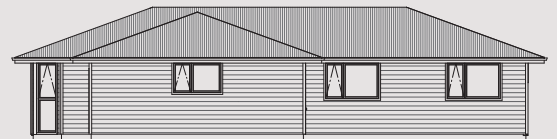
House Area 170m<sup>2</sup>



ELEVATION 1



ELEVATION 2



ELEVATION 3



ELEVATION 4