

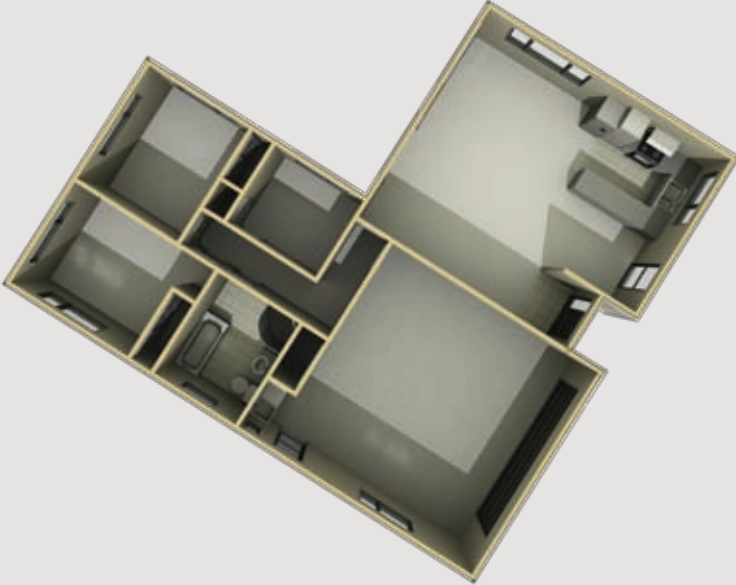


This practical two-three bedroom home provides full sized family living in a compact space. Open-plan living opens outdoors to bring the outside in.

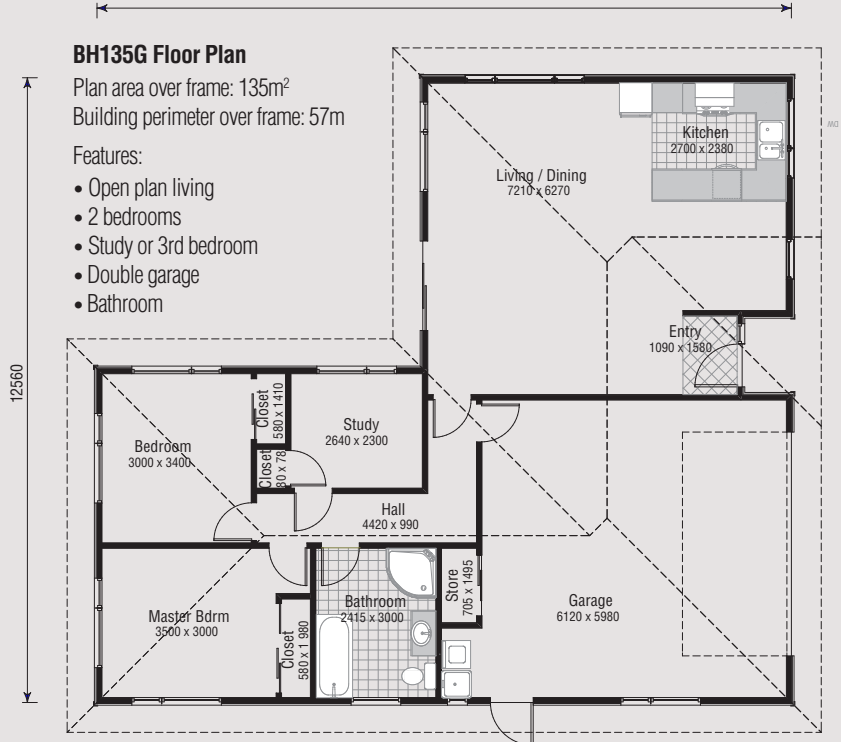
- Spacious open-plan living
- Easy indoor/outdoor flow
- 2 bedrooms
- Double internal access garage
- Separate study or 3rd bedroom
- Bathroom



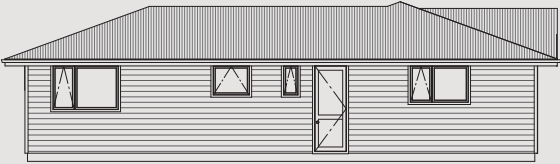
3D FLOOR PLAN



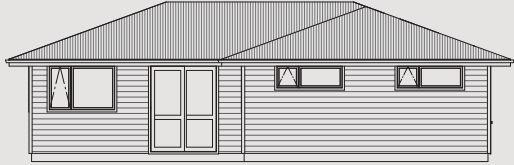
FLAT FLOOR PLAN



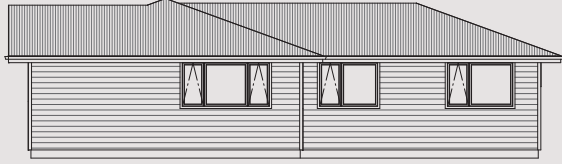
House Area	135m ²
------------	-------------------



ELEVATION 1



ELEVATION 2



ELEVATION 3



ELEVATION 4

* All images are artist impressions or for display purposes only. Furnishings are not included in home package. Plans and descriptions have been prepared in good faith and with due care. Alterations may occur without notice. Intending purchasers should satisfy themselves by inspection and/or clarification with their builder prior to purchase. All plans are copyright whole and in part.